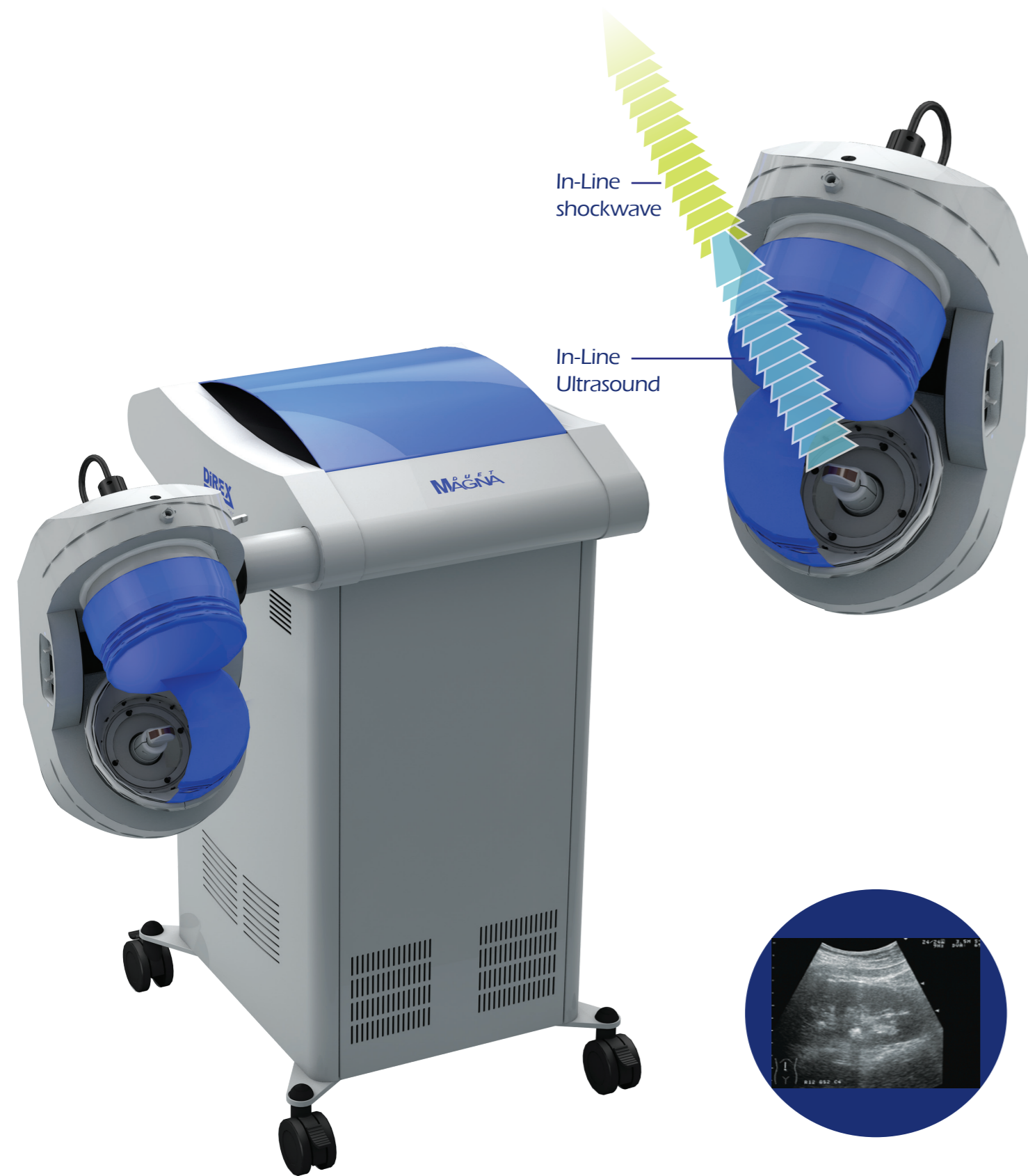


"In-Line/On-Line" Ultrasound



Ideally, ultrasound localization should be applied by presenting an image that coincides with the shockwave delivery path. Magna's special design allows in-line ultrasound image acquisition without stopping the treatment session. On-line imaging allows continuous monitoring and control of the stone fragmentation process without stopping the treatment. Ultrasound and X-ray imaging can be operated and viewed simultaneously with the dedicated Duet Magna image processing software.

Distribution

Direx and Initia distribute in over 70 countries worldwide.

Direct sales offices are listed below. For contact details of distributors in other countries, please contact: info@direxgroup.com / info@initiaimed.com

United States

USA -
Direx Systems Corp.
Canton, MA
Tel: +1 339 502 6013
Toll Free: 888 824 7837
Fax: +1 339 502 6018
E-Mail: marketing@direxusa.com

Latin America

Argentina -
Direx Argentina
Buenos Aires
Tel: +54 11 5278 5964
Fax: +54 11 4032 0171
E-Mail: info@direx-argentina.com.ar

Brazil -
Direx Do Brasil Ltda.
Sao Paulo
Tel: +55 11 4223-5070
E-Mail: direx@direxdoBrasil.com.br

Mexico -
Direx De Mexico
Mexico City
Tel: +52 55 5519 7467
Fax: +52 55 5519 7102
E-Mail: dgm@direxdemexico.com.mx

Europe

European Headquarters -
Direx Systems GmbH
Wiesbaden, Germany
Tel: +49 180 215 2152
Fax: +49 180 215 1151
E-mail: europe@direxgroup.com

Asia

Japan -
Direx Japan K.K.
Tokyo
Tel: +81 3 5807 3111
Fax: +81 3 5807 3112
E-Mail: contact@direxjp.co.jp

China
Service Center
Tel: +86 1350 1253 413
E-mail: direx@163.com

India
Direx Systems Ltd.
Chennai
Tel: +91 44 426 12703/4
Fax: +91 44 426 12705
E-Mail: direx@vsnl.com

Korea -
Direx Korea Co. Ltd.
Seoul
Tel: +82 2 565 4793
(4794, 4795)
Fax: +82-2-565-4743
E-Mail: bk1231@direxkorea.com

TECHNOLOGY FOR UROLOGY -

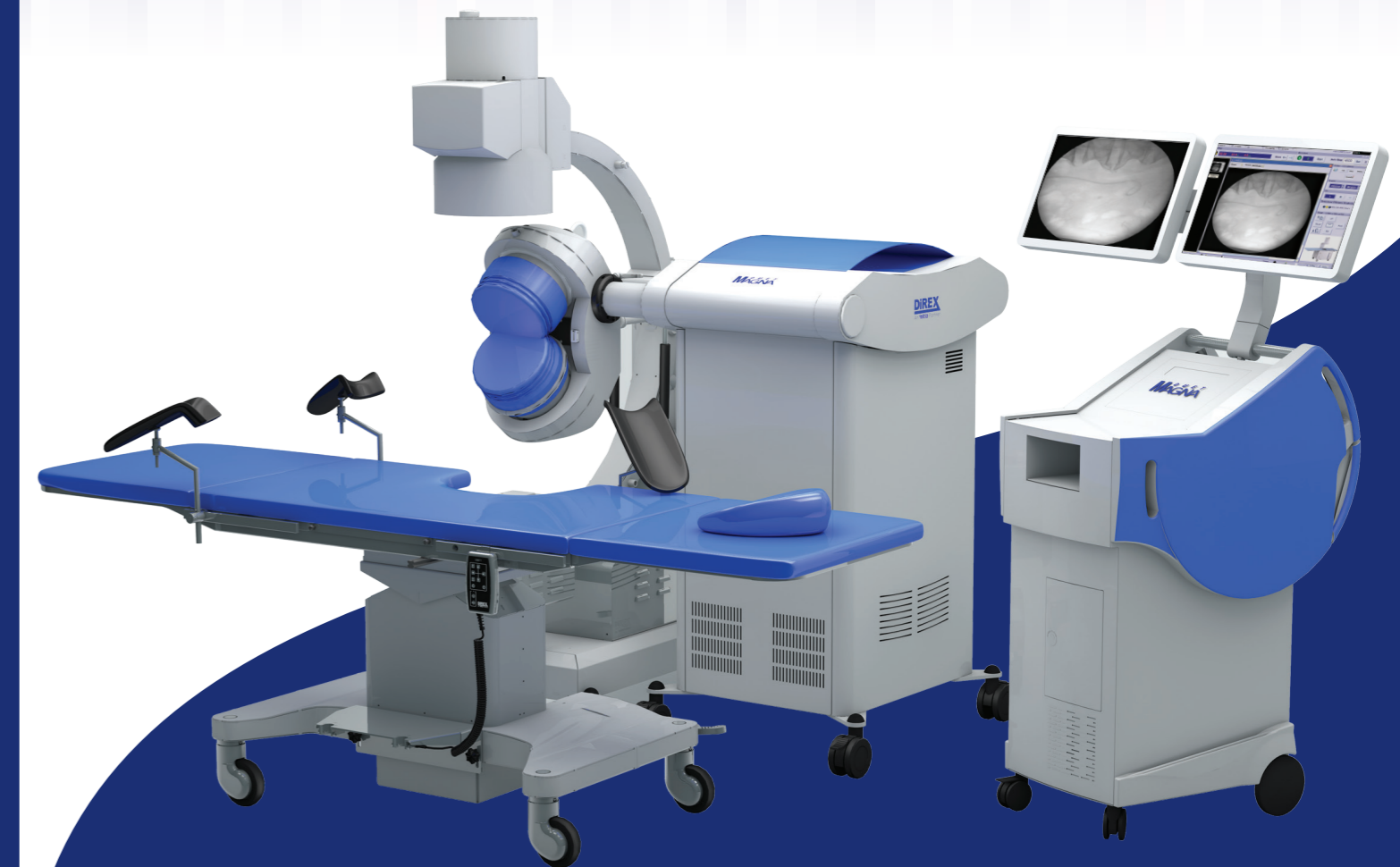
Dedicated to providing urologists worldwide with innovative high-technology devices.

Direx, partnered with Initia, marks 25 years of high technology innovation during which we have offered advanced and unique therapeutic technologies in urology. Since the groundbreaking introduction in 1986 of the world's first modular and compact SWL system, further innovations by the company include:

- Linear Shockwave Therapy (LSWT) for Erectile Dysfunction
- Dual-head shockwave lithotripsy
- Transurethral RF bipolar treatment for BPH and prostate disease
- Stationary patient SWL with Integra, incorporating In-line On-line fluoroscopy
- Holmium lasers for lithotripsy with "Fibrex" optical fibers

To-date, thousands of such urological devices have been installed in over 70 countries worldwide. These units are supported by a group of direct distribution companies, as well as a network of independent distribution partners, who have extended experience with our devices.

Dual Shockwave Lithotripsy



magna/041 4hs/dt

D U E T
MAGNA

DIREX
An Initia Partner

info@direxgroup.com
www.direxgroup.com

DIREX
An Initia Partner

Electromagnetic DSWL Double Shockwave Lithotripsy

Dual Magna introduces the combination of electromagnetic technology and the double shockwave concept allowing for some clear and unique advantages in the field of shockwave lithotripsy.



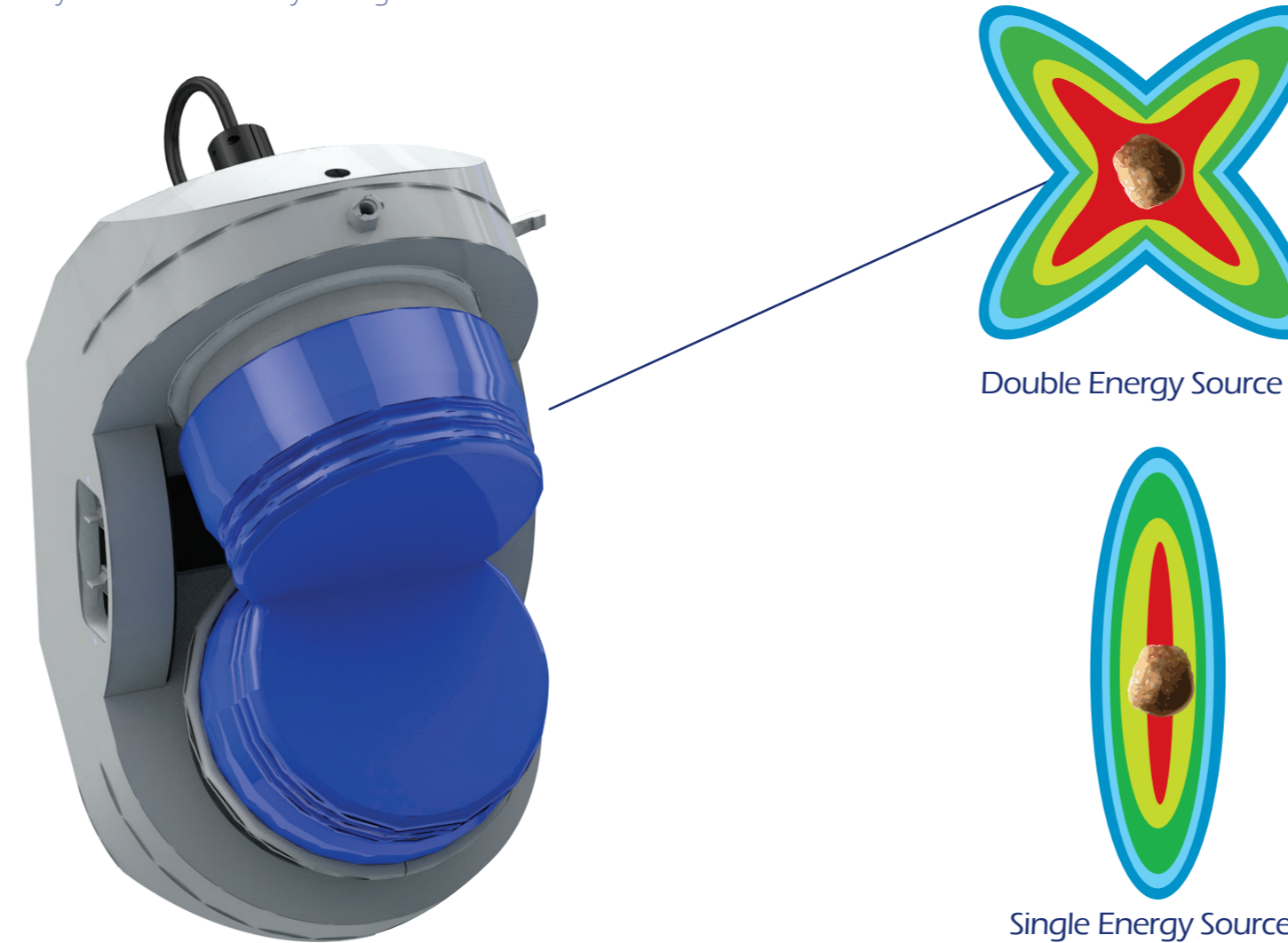
Reducing Kidney Damage

An Indiana University study on Double Shockwave Lithotripsy (performed on the Duet Magna's predecessor device) showed a 5-fold reduction in kidney damage*. "The lesion produced by 2400 SWs (1200 SWs/head, power level 10) at 120 SWs/min in alternating mode was quite low (0.22 ±0.09% FRV) and compares favorably with the lesion (1.08 ±0.38% FRV) produced by 2400 SWs delivered with the HM3 Lithotripter at 120 SWs/min (24 kV)..." *Handa et al. Journal of Urology, February 2009

The Butterfly Focal Area

The Duet Magna is equipped with two reflectors and performs Double Shockwave Lithotripsy (DSWL) from these two sources.

DSWL results in the formation of a unique Butterfly Focal Area that concentrates pressure to the stone from two different angles, and spreads the "head and tail" of the shockwave volume to reduce the risk of kidney damage. In fact, the Duet Magna roughly converts the focal volume to a sphere, which is considered the ideal focal volume for lithotripsy. The Butterfly Focal Area is superior to the conventional ellipsoid, or "cigar", that only utilizes the central section of the focal area. This renders the "head and tail" of the focal area useless in terms of stone disintegration and only contributes to kidney damage



Distribute the Energy to Reduce Renal Damage

The Duet Magna, like its predecessor, the electro-hydraulic Duet, causes significantly less kidney damage than treatments with a single reflector. The clear advantage of Double Shockwave Lithotripsy lies in the fact that the total number of shocks is divided between two areas of the kidney so that only half of the shocks propagated towards the stone pass through the lower part of the kidney, while the other half pass through the upper part.

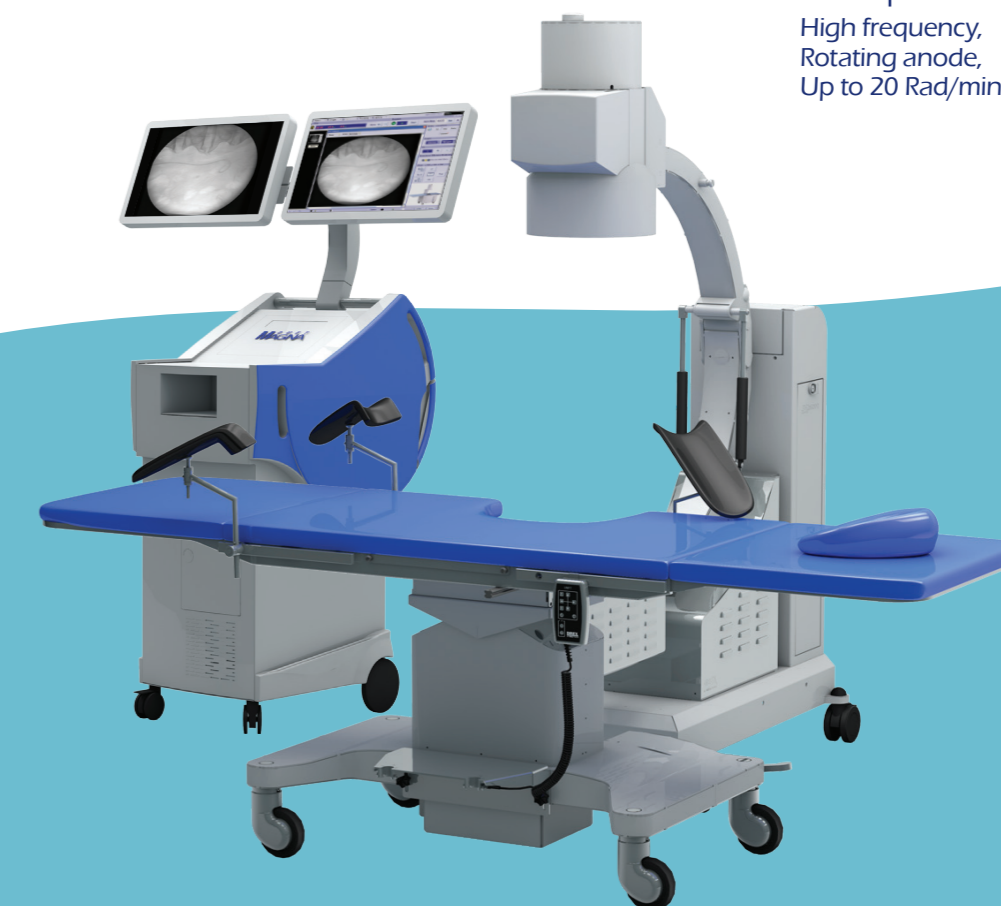
C-arm Options

A variety of fluoroscopy units can be used with the Magna for stone localization, 3DScope dedicated systems or general purpose C-arms.

C-arms from a variety of manufacturers can easily be coupled to the Duet Magna, and can be used for lithotripsy as well as for traditional urological procedures.

Direx offers 3DScope Premium, a dedicated, motorized, remote controlled unit, with high quality digital imaging.

- Mechanically built with required height and length to match the focal point of Magna, it interconnects mechanically as a single unit.
- Motorized rotation movement for fast and precise localization.
- Remote controlled from Magna console, thus allowing treatments with minimal possible radiation to the operators.
- Foldable arm leading to easy transportation for mobile systems.



Urological Procedure Options

The treatment table enables comfortable Shockwave lithotripsy treatment as well as other urological procedures. The table is electrically operated on three axes plus the Trendelenburg movement.